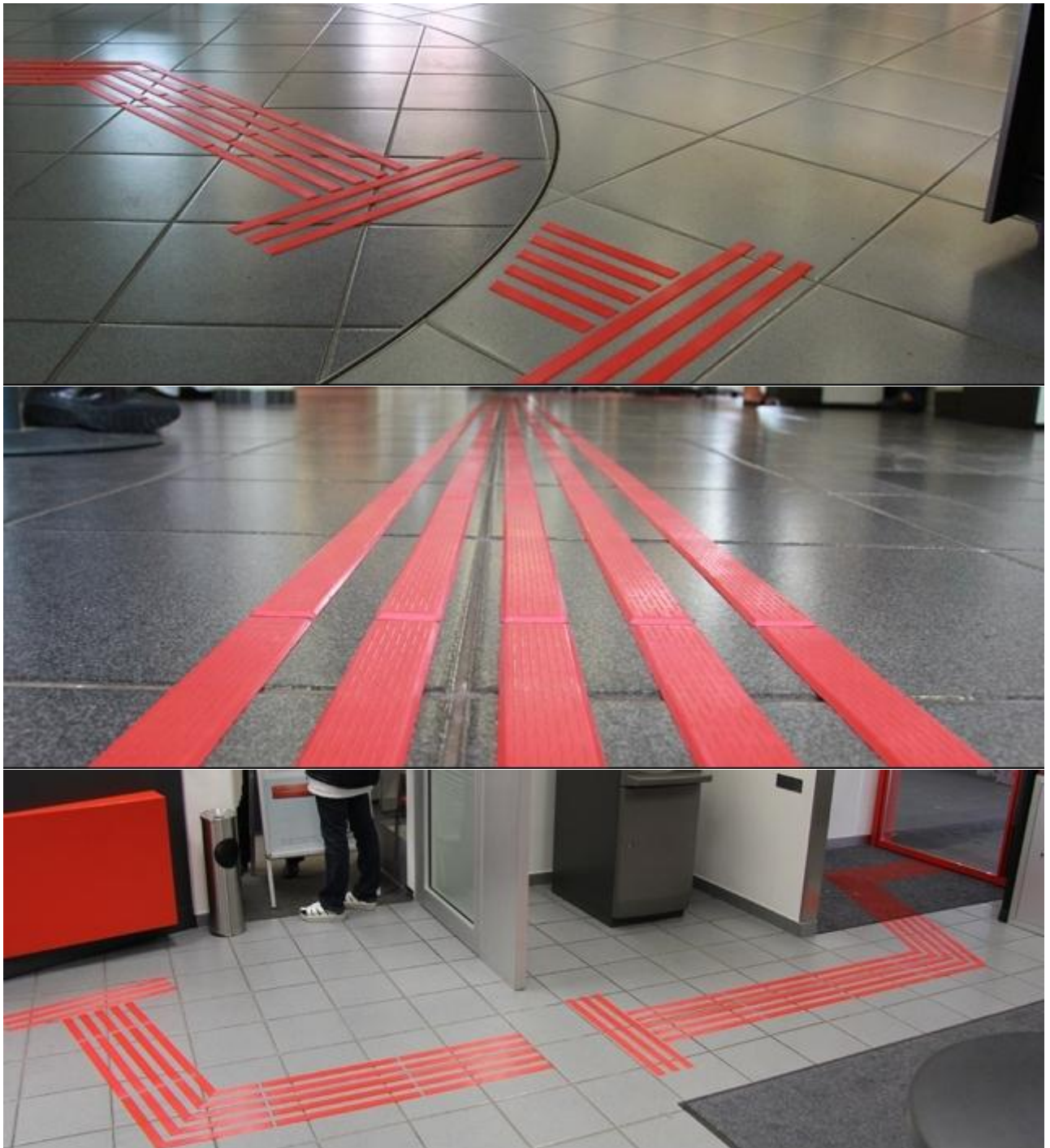


Tactile guide strips from polyurethane TPU-LINE



Tactile surface guidelines / tactile guide strips from polyurethane

Individual **tactile surface guidelines /tactile guide strips/** in shape of longitudinal ribs are made of long term UV stable polyurethane material and ensure long lasting stable performance. They are designed to alert and **inform blind and visually impaired people** about imminent danger, or provide them with directional instructions. According to the law against discrimination of **blind and visually impaired people** it is required to ensure the location of a tactile guideline in shape of longitudinal strips in **shopping centres, railway stations, squares and in all public areas described by the standard.**

- **tactile surface guideline / tactile guide strip** - consists of ribs of longitudinal shape and provides direction and orientation instructions
- individual **tactile surface guidelines / tactile guide strips/** are ideal for retrofitting

- individual **tactile surface guidelines / tactile guide strips** / allow to display the floor of the area between individual **tactile guidelines/** are ideal for an architecturally excellent design
- location and distribution of **tactile guidelines/ tactile guide strips** / in accordance with the applicable standard of a country
- fast and easy installation with help of a template
- are suitable for application to **interior** and **exterior**
- **polyurethane material**



[TPU/P1](#)



[TPU/P2](#)



[TPU/P3](#)



[TPU/P4](#)

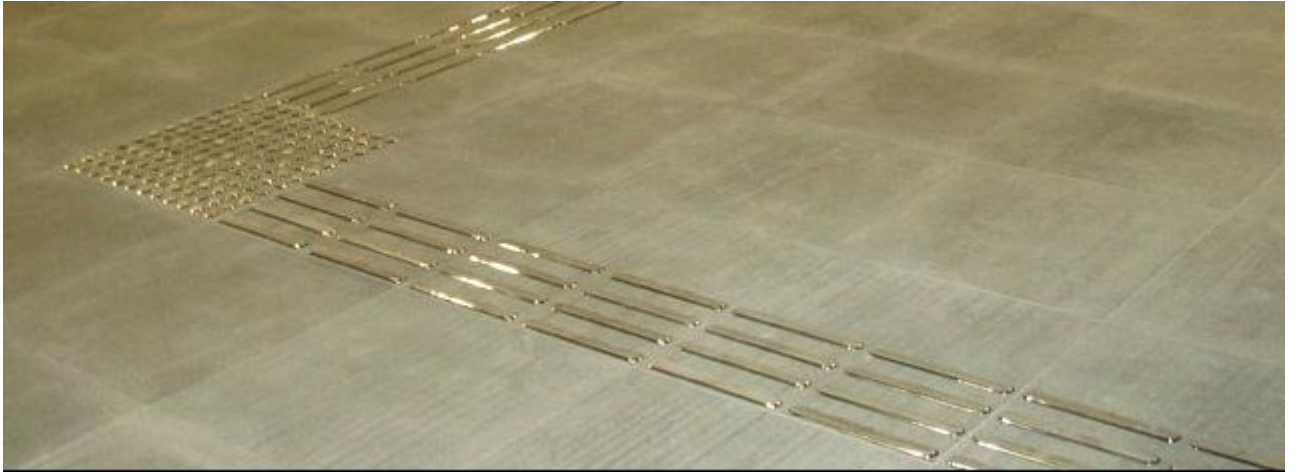


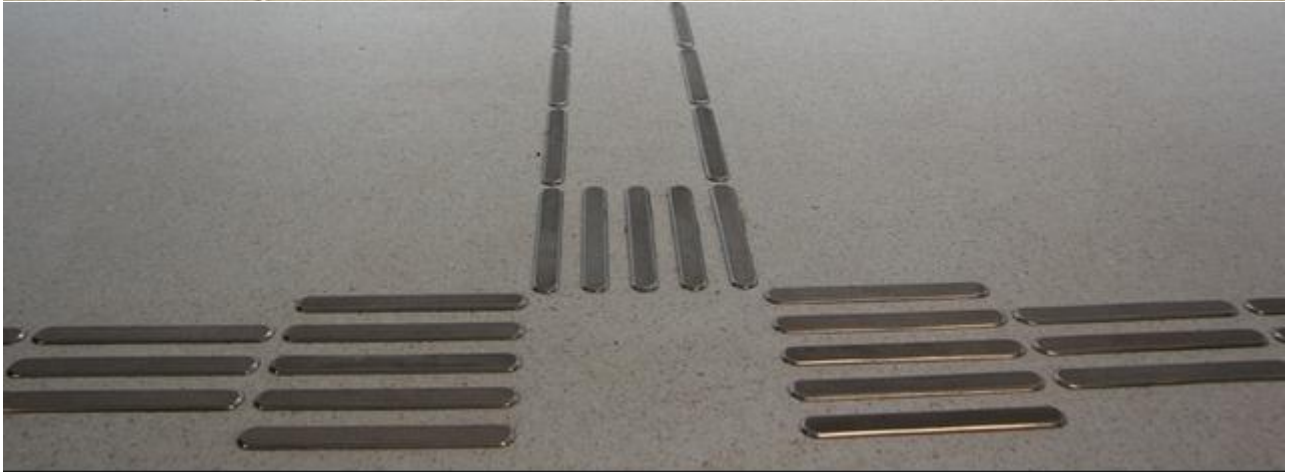
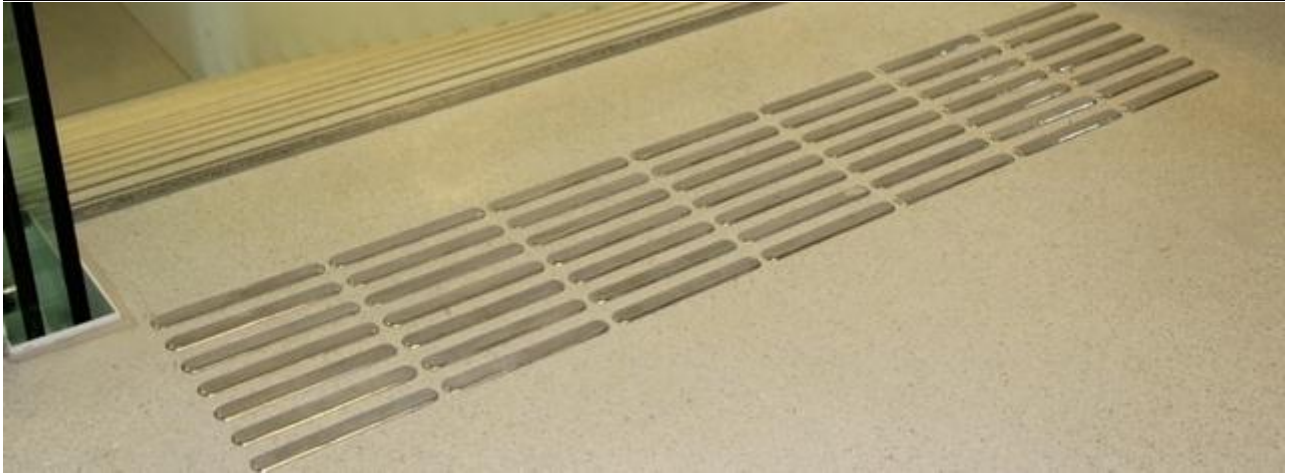
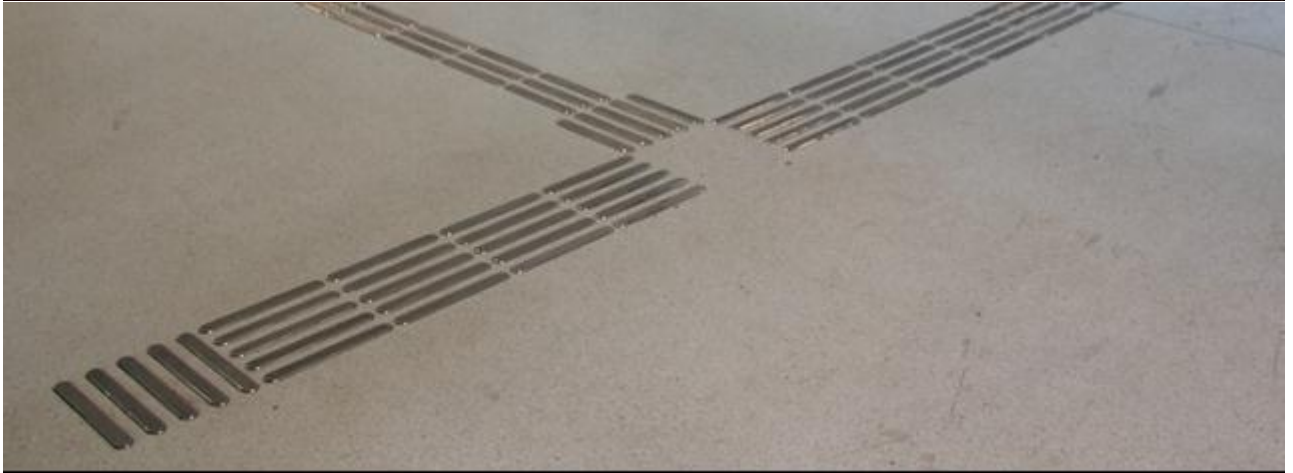
Available Colours:

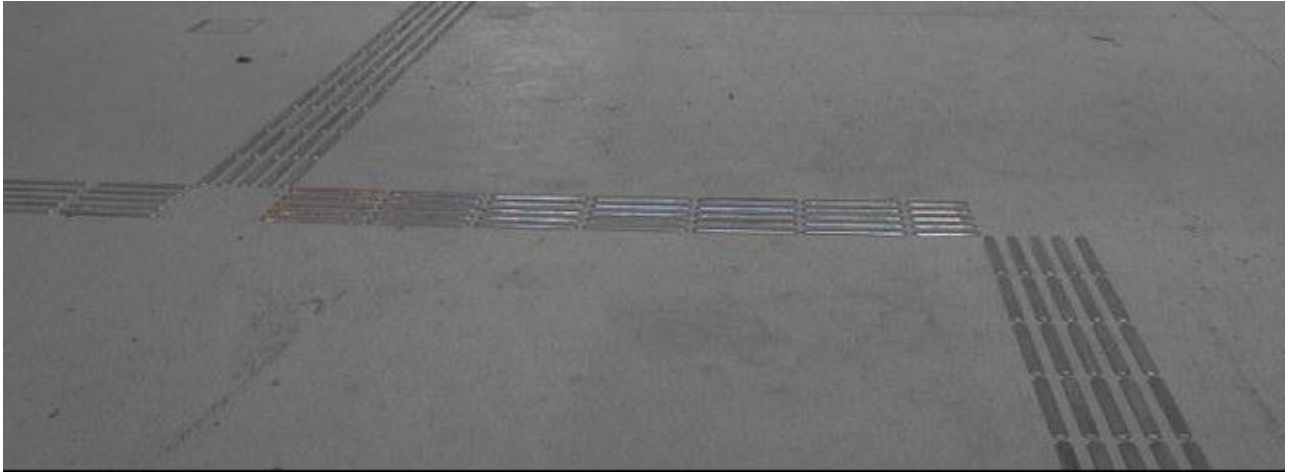
- *black*
- *white*
- *grey*
- *red*
- *blue*
- *yellow*

Tactile surface guide strips from stainless steel AISI-LINE









Tactile surface guide strips from stainless steel

Individual **tactile surface guidelines /tactile guide strips/** in shape of longitudinal ribs are made of **stainless steel** and ensure long lasting stable performance. They are designed to alert and **inform blind and visually impaired people** about imminent danger, or provide them with directional instructions. According to the law against discrimination of **blind and visually impaired people** it is required to ensure the location of a **tactile guideline** in shape of longitudinal strips in **shopping centres, railway stations, squares and in all public areas described by the standard.**

- **tactile surface guideline / tactile guide strip** - consists of ribs of longitudinal shape and provides direction and orientation instructions
- **individual tactile surface guidelines / tactile guide strips/** are ideal for retrofitting
- **individual tactile surface guidelines / tactile guide strips /** allow to display the floor of the area between individual **tactile guidelines/** are ideal for an architecturally excellent design
- location and distribution of **tactile guidelines/ tactile guide strips /** in accordance with the applicable standard of a country
- fast and easy installation with help of a template
- are suitable for application to **interior** and **exterior**
- **stainless steel material**



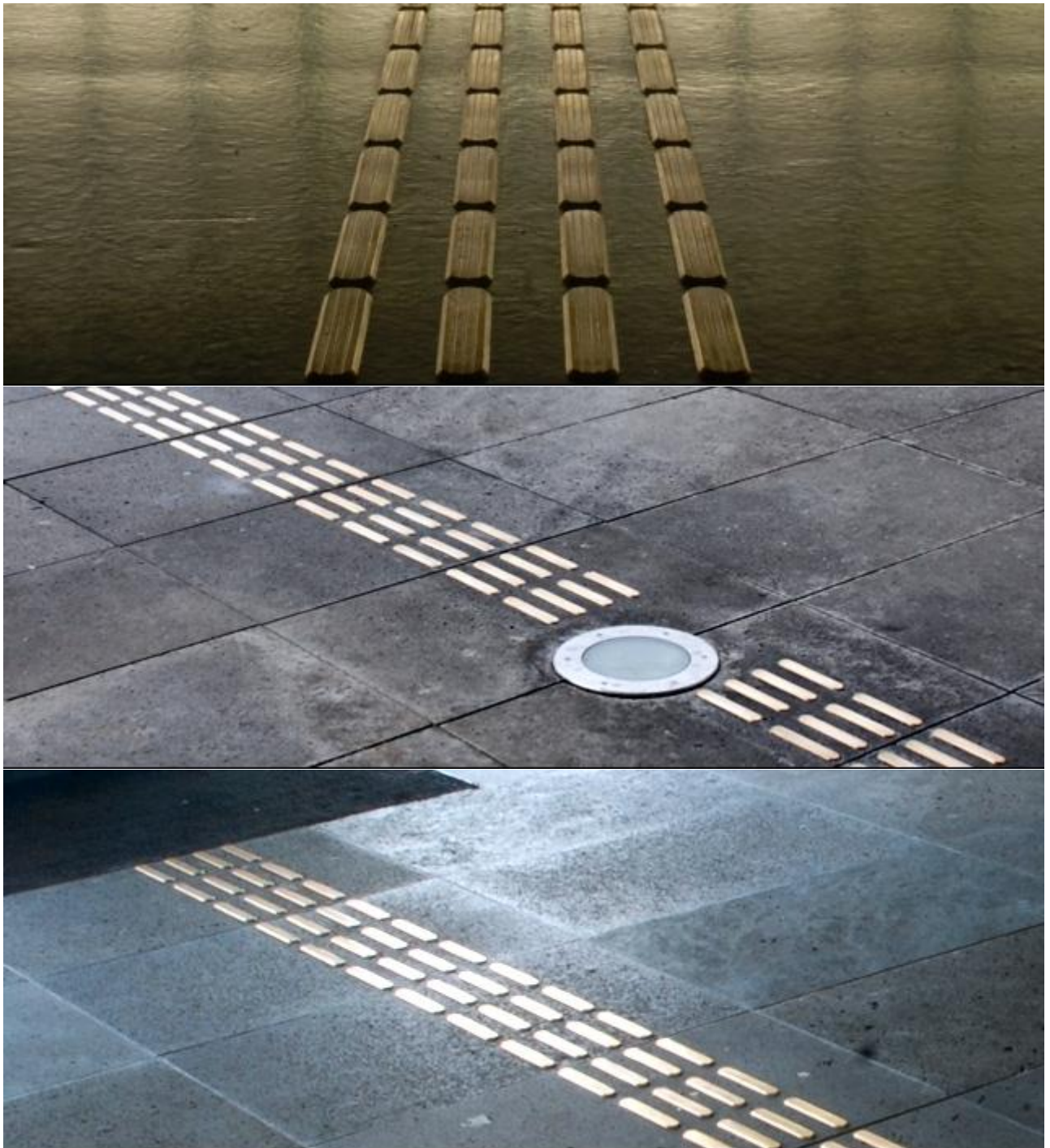
[AISI/PD](#)



[AISI/P1](#)



Tactile surface guidelines / tactile guide strips from brass MS-LINE



Tactile surface guidelines / tactile guide strips from brass

Individual **tactile surface guidelines /tactile guide strips/** in shape of longitudinal ribs are made of brass. They are designed to alert and **inform blind and visually impaired people** about imminent danger, or provide them with directional instructions. According to the law against discrimination of **blind and visually impaired people** it is required to ensure the location of a **tactile guideline** in shape of longitudinal strips in **shopping centres, railway stations, squares and in all public areas described by the standard.**

- **tactile surface guideline / tactile guide strip** - consists of ribs of longitudinal shape and provides direction and orientation instructions

- individual **tactile surface guidelines / tactile guide strips/** are ideal for retrofitting
- individual **tactile surface guidelines / tactile guide strips /** allow to display the floor of the area between individual tactile guidelines/ are ideal for an architecturally excellent design
- location and distribution of **tactile guidelines/ tactile guide strips /** in accordance with the applicable standard of a country
- fast and easy installation with help of a template
- are suitable for application to **interior** and **exterior**
- **brass material**



[MS/P1](#)

Tactile surface guiding lines from aluminium AL-LINE

Tactile surface guiding lines from aluminium

Individual **tactile surface guiding lines /tactile guiding strips/** in shape of longitudinal ribs are made from aluminium and ensure long lasting stable performance. They are designed to alert and inform **blind and visually impaired people** about imminent danger, or provide them with directional instructions. According to the law against discrimination of blind and visually impaired people it is required to ensure tactile guiding lines – by creating a guiding strip **on stairways, ramps, escalators, platforms and in all places that are described in the norm.**

- **tactile surface guiding strip** - consists of a design of lines of longitudinal ribs
- **tactile guiding strip** draws attention to the location of devices, provides direction and orientation instructions
- individual **tactile surface guiding lines** are ideal for retrofitting
- individual **tactile guiding lines** allow to display the floor of the area between individual tactile guiding lines, they are ideal for an architecturally excellent design
- location and distribution of **tactile guiding lines /tactile guiding strips/** in accordance with the applicable norm of your country
- fast and easy installation with help of a template
- are suitable for application in **interiors and exteriors**
- aluminium material



[AL/P1-P](#)

Tactile surface warning studs from aluminium AL-LINE

Tactile surface warning studs from aluminium

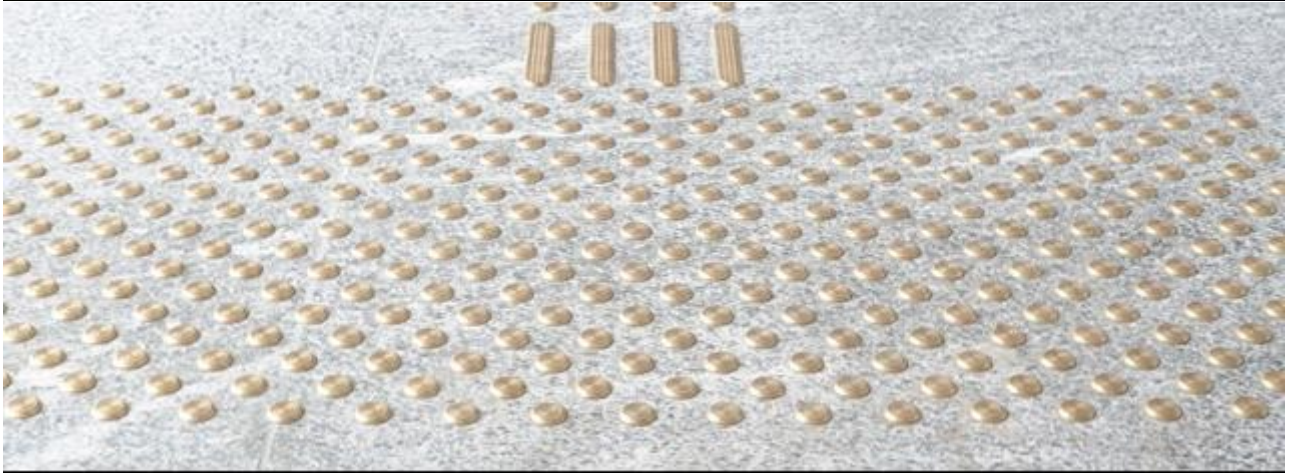
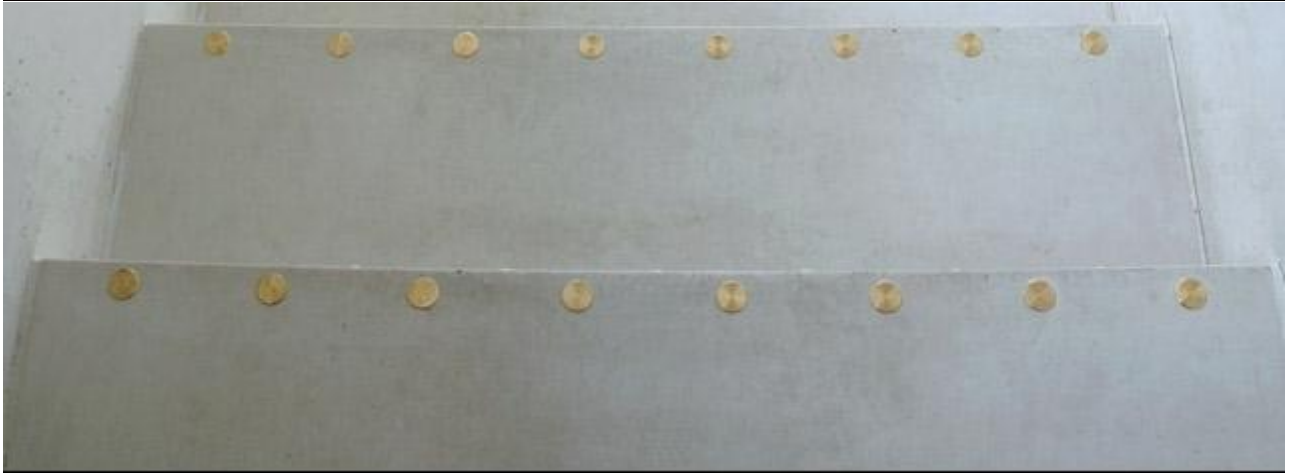
Individual **tactile surface warning studs /tactile warning strips/** in shape of a truncated cone are made from aluminium and ensure long lasting stable performance. They are designed to alert and inform **blind and visually impaired people** about imminent danger, or provide them with directional instructions. According to the law against discrimination of blind and visually impaired people it is required to ensure tactile warning studs – by creating a warning strip **on stairways, ramps, escalators, platforms and in all places that are described in the norm.**

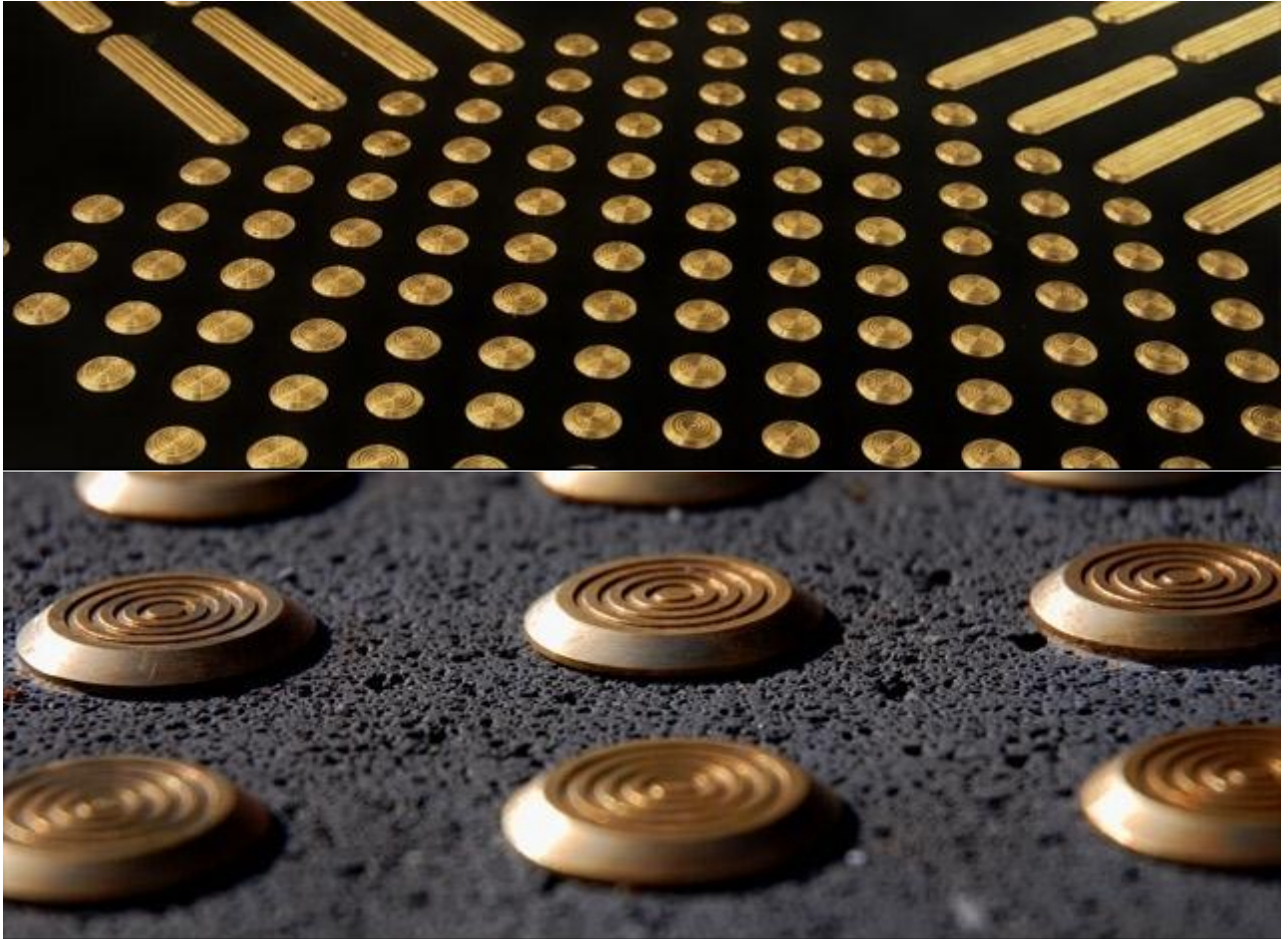
- **tactile surface warning strip** - consists of a design of studs of hemispherical shape with a possible structure in diagonal or radial arrangement
- **tactile warning strip** draws attention to the location of devices, potential hazards or direction changes
- individual **tactile surface warning studs** are ideal for retrofitting
- individual **tactile warning studs** allow to display the floor of the area between individual tactile warning studs, they are ideal for an architecturally excellent design
- location and distribution of **tactile warning studs /tactile warning strips/** in accordance with the applicable norm of your country
- fast and easy installation with help of a template
- are suitable for application in **interiors and exteriors**
- aluminium material



[AL/KP1](#)

Tactile surface warning studs from brass MS- LINE





Individual tactile surface warning studs of brass

Individual **tactile surface warning studs** in shape of a truncated cone are made of brass and ensure long lasting stable performance. **Tactile warning studs** are made with pins and without pins in a variety of designs with a possible plastic insert inserted into the product. The system has already proved good **in train stations, banks, universities, entrance areas, etc.**

- **tactile surface warning plate** - consists of a design of studs of hemispherical shape with a possible structure in diagonal or radial arrangement
- **tactile warning strip** draws attention to the location of devices, potential hazards or direction changes
- individual **tactile surface warning studs** are ideal for retrofitting
- individual **tactile warning studs** allow to display the floor of the area between individual **tactile warning studs/** are ideal for an architecturally excellent design
- location and distribution of **tactile warning studs / tactile warning strips /** in accordance with the applicable standard of a country
- fast and easy installation with help of a template
- are suitable for application to **interior** and **exterior**
- **material brass**



MS/K1

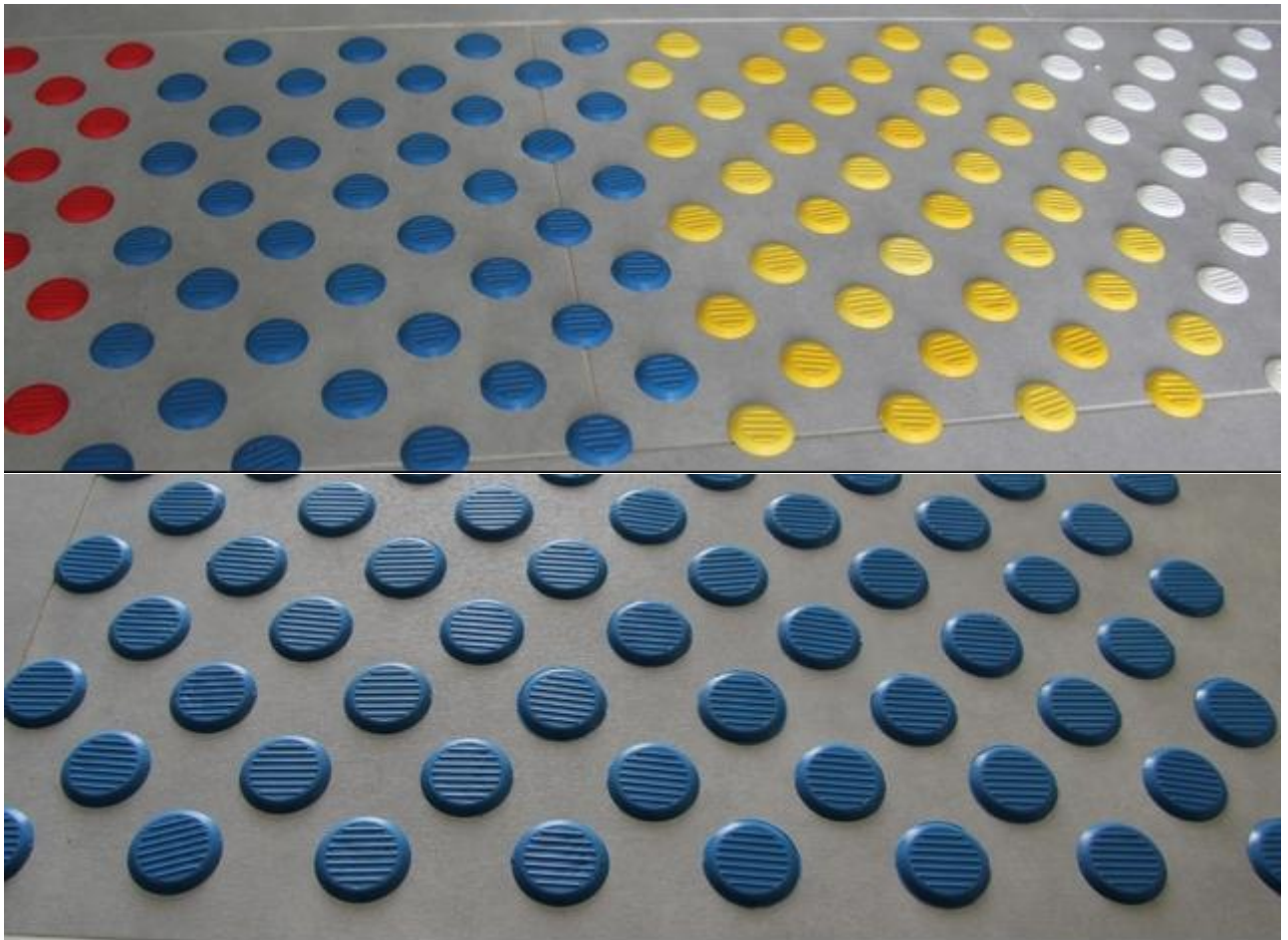


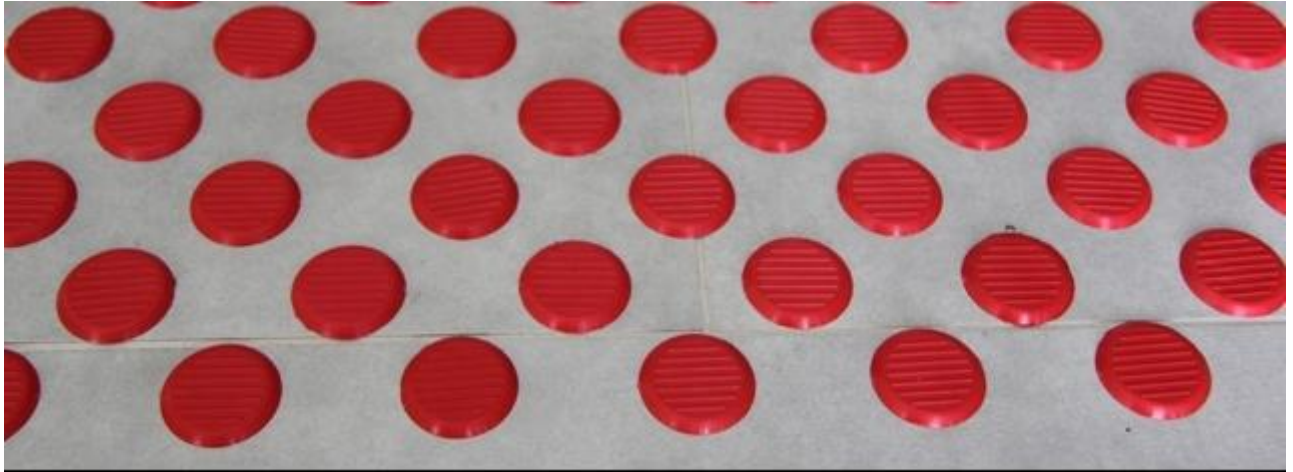
[MS/K2](#)



[MS/KH](#)

Tactile surface warning studs from polyurethane
TPU-LINE



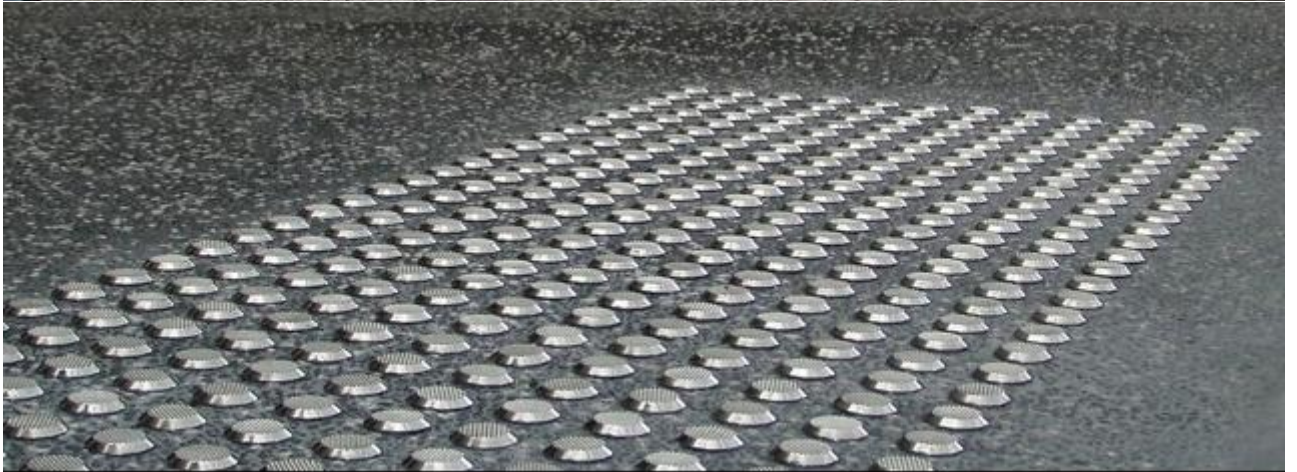
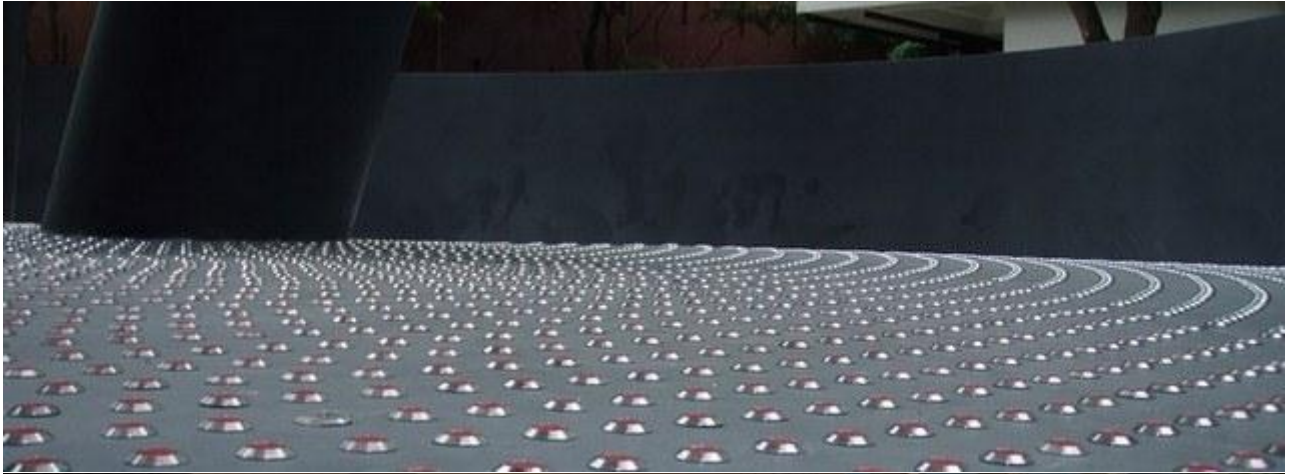


Tactile surface warning studs from polyurethane

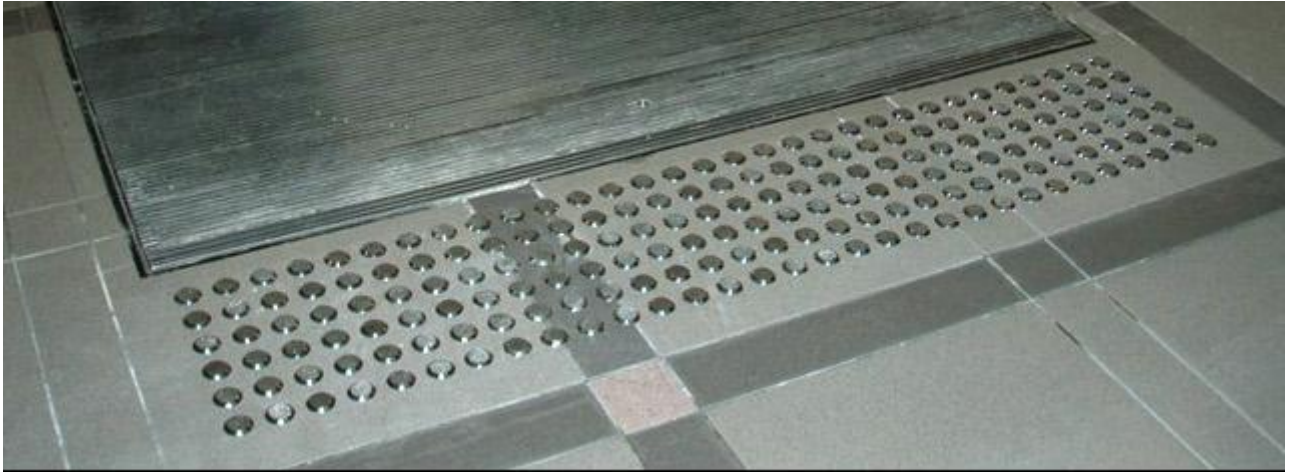
Individual **tactile surface warning studs /tactile warning strips/** in shape of a truncated cone are made from polyurethane and ensure long lasting stable performance. They are designed to alert and inform **blind and visually impaired people** about imminent danger, or provide them with directional instructions. According to the law against discrimination of blind and visually impaired people it is required to ensure tactile warning studs – by creating a warning strip **on stairways, ramps, escalators, platforms and in all places that are described in the norm.**

- **tactile surface warning strip** - consists of a design of studs of hemispherical shape with a possible structure in diagonal or radial arrangement
- **tactile warning strip** draws attention to the location of devices, potential hazards or direction changes
- individual **tactile surface warning studs** are ideal for retrofitting
- individual **tactile warning studs** allow to display the floor of the area between individual tactile warning studs, they are ideal for an architecturally excellent design
- location and distribution of **tactile warning studs /tactile warning strips/** in accordance with the applicable norm of your country
- fast and easy installation with help of a template
- are suitable for application in **interiors and exteriors**
- polyurethane material

Tactile surface warning studs from stainless steel AISI-LINE







Tactile surface warning studs from stainless steel

Individual **tactile surface warning studs /tactile warning strips/** in shape of a truncated cone are made of stainless steel and ensure long lasting stable performance. They are designed to alert and inform **blind and visually impaired people** about imminent danger, or provide them with directional instructions. According to the law against discrimination of **blind and visually impaired people** it is required to ensure **tactile warning studs** – by creating a **warning strip on stairways, ramps, escalators, platforms and in all places that are described in the standard.**

- **tactile surface warning strip** - consists of a design of studs of hemispherical shape with a possible structure in diagonal or radial arrangement
- **tactile warning strip** draws attention to the location of devices, potential hazards or direction changes
- individual **tactile surface warning studs** are ideal for retrofitting
- individual **tactile warning studs** allow to display the floor of the area between individual tactile warning studs/ are ideal for an architecturally excellent design
- location and distribution of tactile warning studs / tactile warning strips / in accordance with the applicable standard of a country
- fast and easy installation with help of a template
- are suitable for application to **interior and exterior**
- **stainless steel material**



[AISI/KD](#)



[AISI/K1](#)



[AISI/KP](#)



[AISI/KS1](#)



[AISI-KH](#)

